

# Introducing Fanvil X300 Series IP Phones

---

Classic Design and Strong Performance

**CONTENTS**

**1**

**Introduction about  
Toshi Sdn Bhd**

**2**

**Product Overview**

**3**

**Product Highlights**

**4**

**Video Highlights on  
Unboxing and Functions**

**5**

**Q&A**



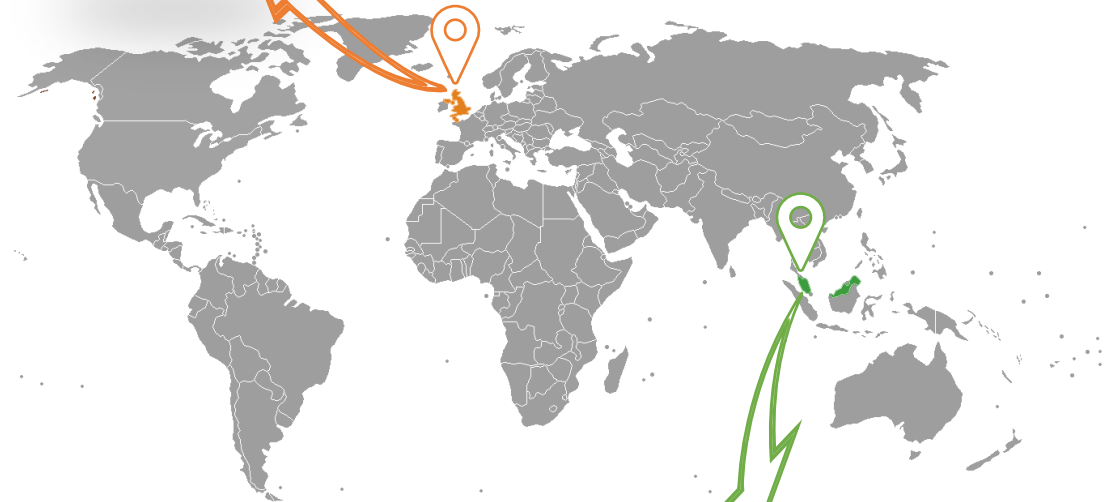
your **Digital Communication Distributor**

Toshi has delivered unparalleled services and expertise to Malaysia Market Since 2006.

**Our Products**



**UK Office**  
**Digital World Centre,**  
**Manchester**



**Malaysia Headquarter**  
**Wisma Chase Perdana,**  
**Kuala Lumpur**

# Beyond Distribution

- ✓ Pre and aftersales support by certified engineers
- ✓ Channel Sales only
- ✓ Local Stock
- ✓ Free Delivery within Klang Valley

your  
**Digital Communication  
Distributor**



**TOSHI**



Join our reseller program today

Scan QR code or visit below URL to register

<http://bit.ly/toshicp>



**Digital Communication  
Distributor**

**TOSHIBA**

**Communication  
Products &  
Solutions  
Distributed  
By  
Toshi Sdn Bhd**

SoftSwitch



IP-PBX



Call & Contact Centre



Voice Gateways



SBC



Microsoft Teams Integration



IP-Phone and Intercom



IP-Paging



Headsets



Communication  
Products &  
Solutions  
Distributed  
By  
Toshiba Sdn Bhd



**Callroute**  
unified telephony

Join our next webinar on 22<sup>nd</sup> February to learn about the Microsoft Teams Integration platform

Scan QR code or visit below URL to register

<http://bit.ly/callroute>



**TOSHI**

your  
**Digital Communication  
Distributor**

**Digital Signage  
Products &  
Solutions  
Distributed  
By**

**Toshi Sdn Bhd**

**Professional Displays**

**PPDS**

**PHILIPS**

**Digital Signage CMS**

 **AnySignage**

**NAVORI**  
DIGITAL SIGNAGE ENGINE

**Interactive Signage CMS**

 **22MILES**  
DIGITAL SIGNAGE & WAYFINDING

**intuiface**

**Wayfinding CMS**

 **22MILES**  
DIGITAL SIGNAGE & WAYFINDING

**Videowall Controllers**

 **userful**

 **VIVIDWALL**

**Digital Signage Players**

**Giada**

**WEIBU**

**Accessories**

**LUMI**

**Digital Podium**

 **TEMAS**

**Customer Feedback Management**



**TOSHI**

your  
**Digital Communication  
Distributor**





your **Digital Communication  
Distributor**

Toshi has delivered unparalleled services and expertise to Malaysia Market Since 2006.

**Our Products**



Join Our Channel Program &  
Lets do something **Big** Together



<http://bit.ly/toshicp>

**CONTENTS**

**1**

**Introduction about  
Toshi Sdn Bhd**

**2**

**Product Overview**

**3**

**Product Highlights**

**4**

**Video Highlights on  
Unboxing and Functions**

**5**

**Q&A**



# NEW PRODUCT LAUNCH

## X300 IP Phones Series

Providing Efficient and High-quality Business  
Communication Experience



Dual-core  
Chip



HD  
Voice



Opus



6-way  
Conference



WiFi  
2.4G/5G  
WiFi



X301 Series

X303 Series

# Solution Spectrum: IP End Point and Security

## ① SIP Business Phones



## ② Hotel Phone

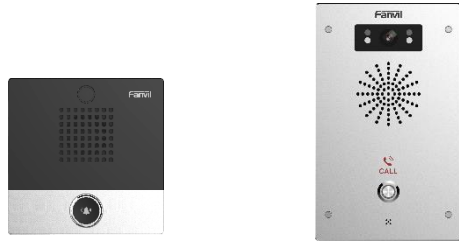


Hospitality (Wi-Fi & Bi-Color)



# Solution Spectrum: IP End Point and Security

## ③ SIP Door Access/ Intercoms/ Public Address



Intercoms



Door Security



Indoor Station  
Wall & Desk mount  
(touch screen)

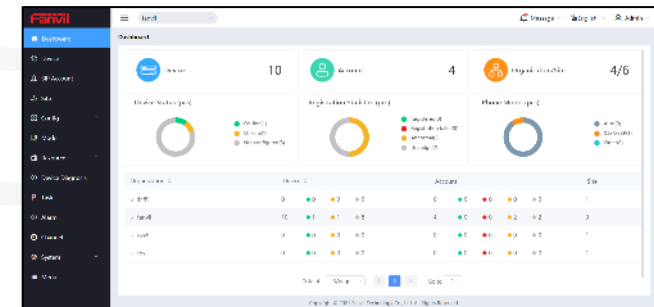


Public  
Broadcasting

## ④ LINKVIL: Wireless



(M) Management



New Fanvil Cloud System FDMCS  
+ Auto Provision & Redirection  
+ Remote Management/Edit

# X300 Series Product Family



## X303 Series



X303



X303P



X303G



X303W

## X301 Series



X301



X301P



X301G



X301W

Fanvil X300 series product family includes the **X303 series** and **X301 series**. They provide **standard, PoE, gigabit, and Wi-Fi versions** to meet the needs of different enterprise application scenarios.

2

# Product Overview

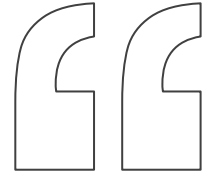
---

# Fanvil X300 Series IP Phones

The X300 series has 8 major product models which have classic design and strong performance, offering an efficient installation and all-in-one communication solution.







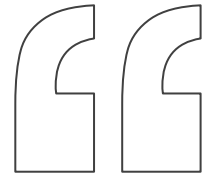
# X303/X303P/X303G/X303W



www.fanvil.com

<b>Operating System</b>	Linux
<b>Screen</b>	2.4" Color Screen (320×240)
<b>SIP Lines</b>	4
<b>DSS Keys</b>	3
<b>Local Phonebook</b>	1000
<b>Wideband Codec</b>	G.722, Opus
<b>Narrowband Codec</b>	G.711(A/μ) , G.726,G.723.1, G.729A/B, iLBC
<b>Color</b>	Black
<b>Working Temperature</b>	0 ~ 45°C
<b>Working Humidity</b>	5%~95%
<b>Installation</b>	Desktop Stand (45° & 50°) Wall Mountable (to be ordered separately)

Model	Network Rate	Wi-Fi	PoE	Power Adapter
X303	10/100Mbps	×	×	√
X303P	10/100Mbps	×	√	—
X303G	10/100/1000Mbps	×	√	—
X303W	10/100Mbps	√	√	√



# X301/X301P/X301G/X301W



www.fanvil.com

<b>Operating System</b>	Linux
<b>Screen</b>	2.3" Dot-matrix screen (128x48)
<b>SIP Lines</b>	2
<b>Local Phonebook</b>	1000
<b>Wideband Codec</b>	G.722, Opus
<b>Narrowband Codec</b>	G.711(A/μ) , G.726,G.723.1, G.729A/B, iLBC
<b>Color</b>	Black
<b>Working Temperature</b>	0 ~ 45°C
<b>Working Humidity</b>	5%~95%
<b>Installation</b>	Desktop Stand (45° & 50°) Wall Mountable (to be ordered separately)

Model	Network Rate	Wi-Fi	PoE	Power Adapter
X301	10/100Mbps	×	×	√
X301P	10/100Mbps	×	√	—
X301G	10/100/1000Mbps	×	√	—
X301W	10/100Mbps	√	×	√

# X301/X301P/X301G/X301W

Operating System	Linux
Screen	2.3" Dot-matrix screen (128x48)
SIP Lines	2
Local Phonebook	1000
Wideband Codec	G.722, Opus
Narrowband Codec	G.711(A $\mu$ ) , G.726,G.723.1, G.729A/B, iLBC
Color	Black
Working Temperature	0 ~ 45°C
Working Humidity	5%~95%
Installation	Desktop Stand (45° & 50°) Wall Mountable (to be ordered separately)

Model	Network Rate	Wi-Fi	PoE	Power Adapter
X301	10/100Mbps	×	×	√
X301P	10/100Mbps	×	√	—
X301G	10/100/1000Mbps	×	√	—
X301W	10/100Mbps	√	×	√

# X303/X303P/X303G/X303W

Operating System	Linux
Screen	2.4"Color Screen (320×240)
SIP Lines	4
DSS Keys	3
Local Phonebook	1000
Wideband Codec	G.722, Opus
Narrowband Codec	G.711(A $\mu$ ) , G.726,G.723.1, G.729A/B, iLBC
Color	Black
Working Temperature	0 ~ 45°C
Working Humidity	5%~95%
Installation	Desktop Stand (45° & 50°) Wall Mountable (to be ordered separately)

Model	Network Rate	Wi-Fi	PoE	Power Adapter
X303	10/100Mbps	×	×	√
X303P	10/100Mbps	×	√	—
X303G	10/100/1000Mbps	×	√	—
X303W	10/100Mbps	√	√	√

3

# Product Highlights

---

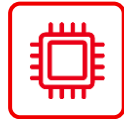


# Product Highlights

Fanvil



Classic Design



Powerful Chip



HD Audio



6-party Conference



Built-in WiFi



High-Speed Network



High Scalability



Two Installation Methods



# Classic Design, Ease of Use

Fanvil

- The **X303 series'** appearance is elegant, simple, and stylish. It features a **2.4-inch color screen**.
- With a user-friendly UI, it brings you comfortable and efficient experience.

**Enjoy better visual experience!**

\* The X301 series features a 2.3-inch dot-matrix screen

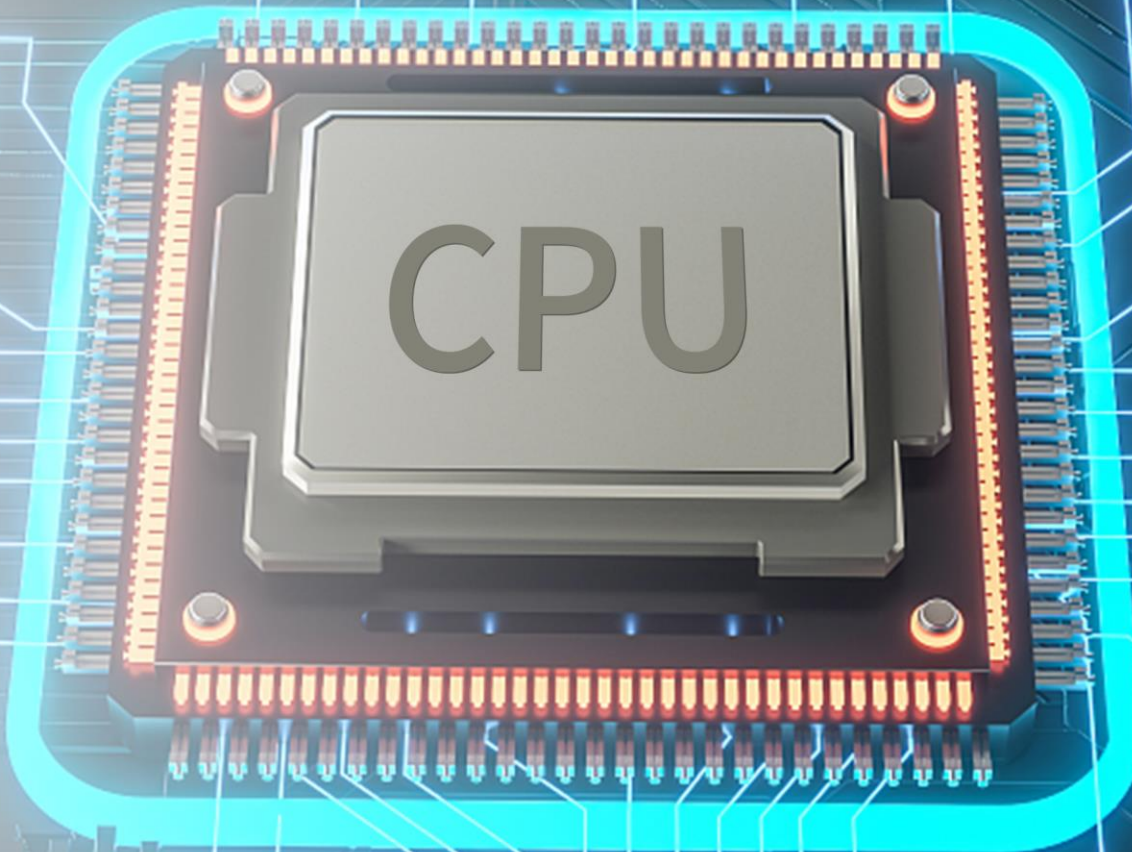


# Dual-core Chip, Promote Office Efficiency

Fanvil

- Based on a powerful **dual-core chip**, the X300 series has powerful overall performance, fast response, and smooth operation.

**Smooth and fast  
execution!**





# HD Audio Call, Hear More Details

Fanvil

- The X300 series supports wideband audio codec **Opus** and **G.722**, and it is coupled with the **Noise Reduction** technologies and **Full-duplex AEC**.



**Bring you an immersive auditory experience .**



# Support 6-party Audio Conference



- Support **6-party** audio conference.  
(organizer can invite **up to 5 participants**)

**Asynchronous collaboration among departments and parties is easy**



# Built-in 2.4G & 5G Wi-Fi

Fanvil

- **X303W** and **X301W** support **2.4G & 5G Wi-Fi**, enabling users to have more choices to connect the network and build the wireless office.
- Less wiring makes the office environment conciser, and the device deployment more flexible.

**Dual-band provides flexible choices on wireless network!**





# High-Speed Network, Speed Up Your Work

Fanvil

## X303G & X301G

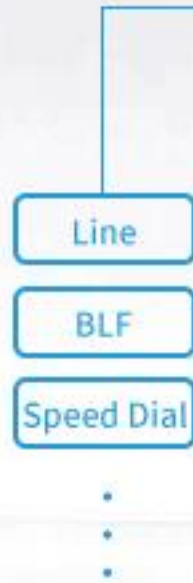
- Provide users high-speed office experience with **Dual 10/100/1000 Mbps network ports.**
- Integrated PoE enables power supply and networking via one cable.



# High Scalability with DSS Keys



- The **X303 series** has **3 DSS keys**. Each DSS key can be set to **Line/BLF/Speed Dial** extension, which can be triggered by one click after configuration.



**Improve work efficiency!**

# Flexible Installation for Multiple Scenes

Fanvil

- Support **45°** and **50°** two-angle **desktop installation mode**, they can be hung through the external wall-mount bracket.

**Meet the needs of various application environment.**

\* Wall-mount bracket need to be ordered separately



4

# Video Highlights

Unboxing and Functions



# Unboxing X303 Series



Please watch the unboxing video using link below

<https://www.youtube.com/watch?v=FpB5ZO6HrIk>



Please watch the X303 highlight video using link below

<https://www.youtube.com/watch?v=KsNMNUJie90>



5

# Q&A



# THANKS

---

## Toshi Sdn Bhd

Sole Distributor of Fanvil products in Malaysia



[sales@toshi.com.my](mailto:sales@toshi.com.my)



(+6) 03 2787 9191



[www.toshi.com.my](http://www.toshi.com.my)